



WILO Star Submittal

Classic Star - Cast Iron



Project:	
Engineer:	
Contractor:	
Submitted By:	Date:
Approved By:	Date:

Tag #	Model #	Flow	Head	Volt	Phase	Comments
				115	1	
				115	1	

Applications

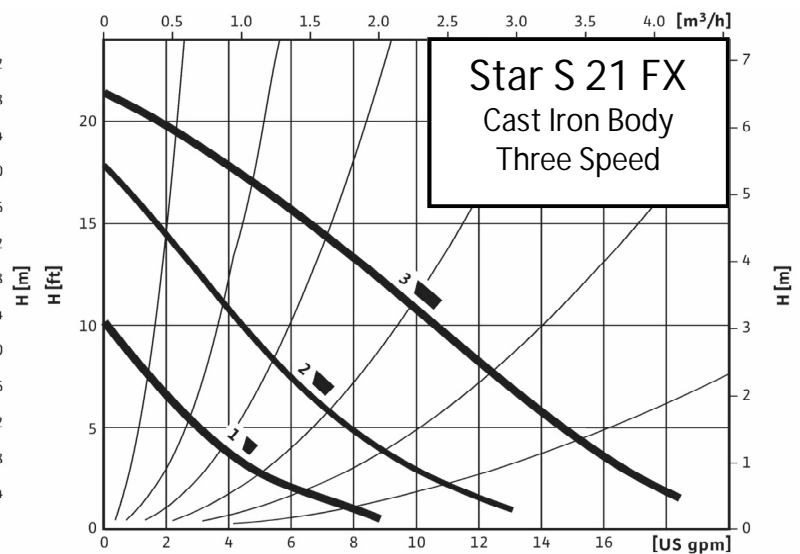
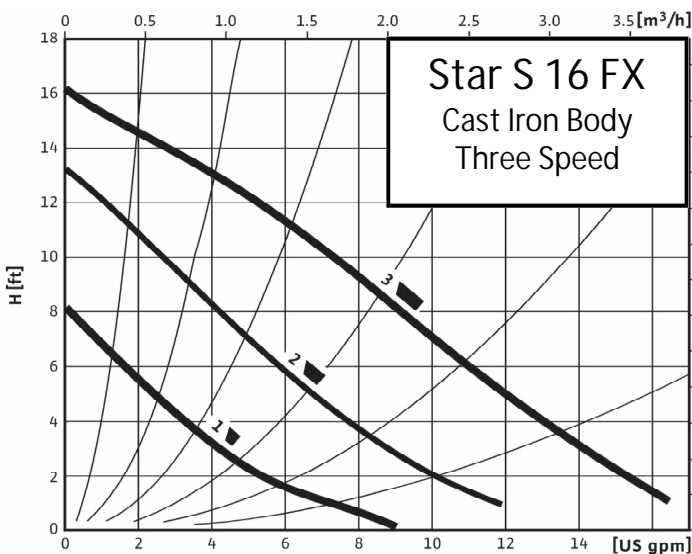
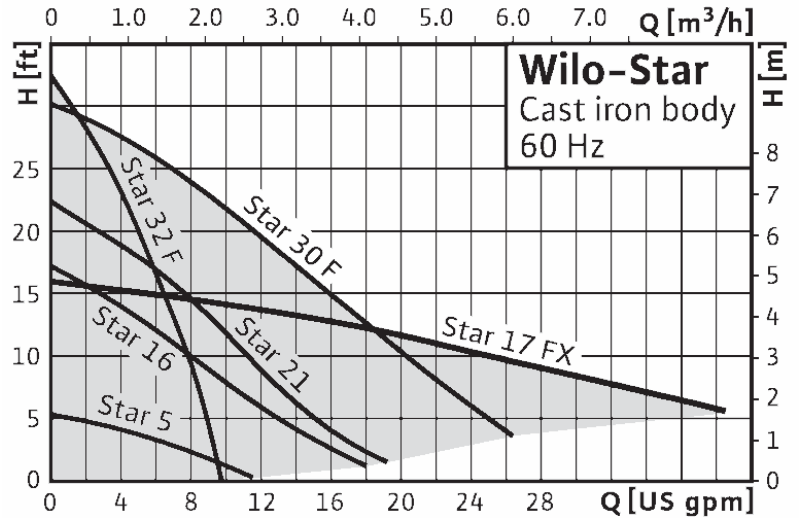
Maximum Temp - 14 to 230 Deg F (- 10 to 110 Deg C)
 Maximum Ambient Temp 104 Deg F (40 Deg C)
 Maximum Working Pressure 140 PSI (10 Bar)

Materials of Construction

Impeller Polypropylene (40% Glass Filled)
 Shaft Stainless Steel (X40 Cr13)
 Bearing Metal Impregnated Carbon
 Volute Cast Iron (Closed Systems)

122 deg F (50 deg C)	0.7 PSI
203 deg F (95 deg C)	4.4 PSI
230 deg F (110 deg C)	14.5 PSI

Min Inlet Pressure



Wilo Canada Inc
 Wilo USA LLC
 Bay 7 - 2915 - 10th Ave N. E.
 Calgary, Alberta, T2A 5L4
 Phone: 1 403 276 WILO Fax: 1 403 277 WILO

Toll Free USA: 1 866 WILO USA
 Toll Free Canada: 1 866 WILO CDN
www.wilo-na.com

Literature Number SCISD-0609 (pg 1/2)



WILO Star Submittal

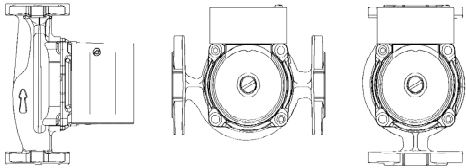
Classic Star - Electrical and Dimensional Info



Pumpen Intelligenz.

Installation Instructions - Shaft Horizontal

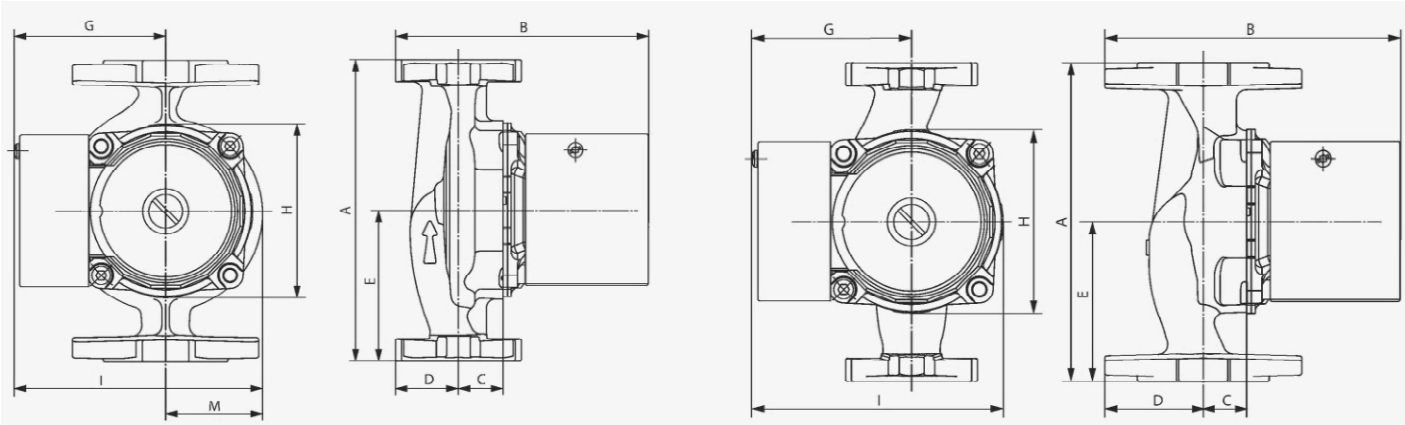
Motor and Electrical Data



Model (speed)	Rated Power (P2)	Speed	Power Consumption	Amps @ 115/60	Capacitor (uF)
Star 5 FX	0.03 Hp (20 Watt)	3400	0.07 Hp (50 Watt)	0.49	7
Star 16 FX	0.05 Hp (35 Watt)	2700	0.11 Hp (80 Watt)	0.66	7
Star 21 FX	0.05 Hp (40 Watt)	2700	0.15 Hp (110 Watt)	0.92	9
Star 17	0.10 Hp (70 Watt)	3000	0.23 Hp (166 Watt)	0.58	7
Star 30 F	0.10 Hp (70 Watt)	2700	0.24 Hp (173 Watt)	1.50	12
Star 32 F	0.05 Hp (40 Watt)	2700	0.15 Hp (113 Watt)	0.92	9
Star S 16 FX (3)	0.05 Hp (35 Watt)	2700	0.10 Hp (80 Watt)	0.66	7
Star S 16 FX (2)	0.05 Hp (35 Watt)	2200	0.08 Hp (60 Watt)	0.55	7
Star S 16 FX (1)	0.05 Hp (35 Watt)	1600	0.05 Hp (41 Watt)	0.38	7
Star S 21 FX (3)	0.05 Hp (40 Watt)	2700	0.13 Hp (110 Watt)	0.92	9
Star S 21 FX (2)	0.05 Hp (40 Watt)	2100	0.10 Hp (83 Watt)	0.75	9
Star S 21 FX (1)	0.05 Hp (40 Watt)	1300	0.07 Hp (56 Watt)	0.56	9

Star F Series

Star FX Series



Dimensions (inches/mm) - NOTE: Star 17 uses the larger 2 bolt oval flange (commercial type).

Model	A	B	C	D	E	G	H	I	M	Wt
Star 5 FX	6 3/8 (162)	6 (150)	7/8 (22)	2 (50)	3 1/4 (81)	3 1/4 (81)	3 3/4 (94)	5 (128)	-	6.5 (3.0 kg)
Star (S) 16 FX	6 3/8 (162)	6 (150)	7/8 (22)	2 (50)	3 1/4 (81)	3 1/4 (81)	3 3/4 (94)	5 (128)	-	6.5 (3.0 kg)
Star 17 FX	8 1/2 (216)	7 (176)	1 1/8 (33)	2 1/2 (55)	4 1/4 (108)	3 1/4 (82)	3 7/8 (96)	5 1/2 (130)	-	10.8 (4.9)
Star (S) 21 FX	6 3/8 (162)	6 (150)	7/8 (22)	2 (50)	3 1/4 (81)	3 1/4 (81)	3 3/4 (94)	5 (128)	-	6.5 (3.0 kg)
Star 30 F	6 1/2 (165)	6 1/8 (153)	1 1/4 (31)	1 3/8 (34)	3 3/8 (83)	3 1/4 (81)	3 7/8 (96)	5 1/4 (132)	2 (50)	8.0 (3.7 kg)
Star 32 F	6 3/8 (162)	5 3/8 (136)	7/8 (24)	1 3/8 (34)	3 1/4 (81)	3 1/4 (81)	3 3/4 (94)	5 (128)	2 1/8 (52)	6.7 (3.1 kg)

Wilo Canada Inc
 Wilo USA LLC
 Bay 7 - 2915 - 10th Ave N. E.
 Calgary, Alberta, T2A 5L4
 Phone: 1 403 276 WILO Fax: 1 403 277 WILO

Toll Free USA: 1 866 WILO USA
 Toll Free Canada: 1 866 WILO CDN
www.wilo-na.com

Literature Number SCISD-0609 (pg 2/2)